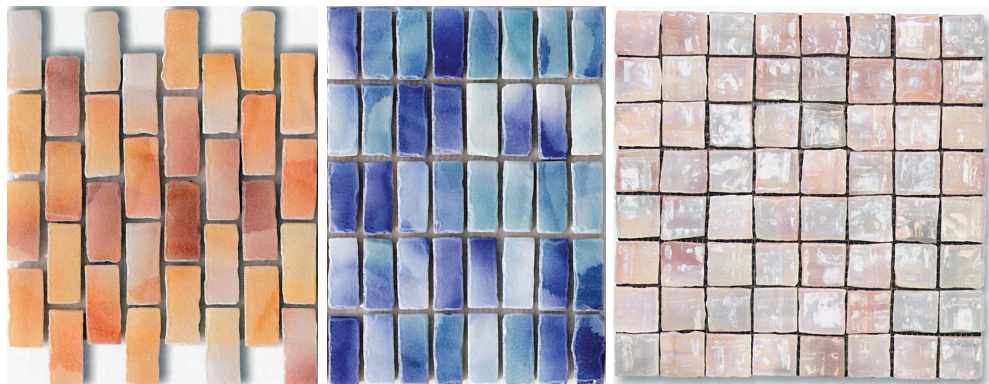
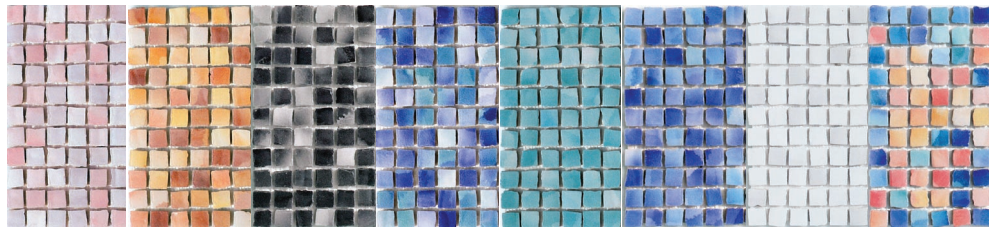


Frammenti Glass Mosaic

General: This material is designed to provide highlight and contrast – fragments that create reflections. This special hand-painted watercolour combined with glass, gives a depth to the iridescent tones of the mosaic colours. This collection is on solid body porcelain, and has a finish that evokes antique Venetian glass.

Applications: These beautiful glass mosaics highlight all residential and commercial areas; bathrooms, kitchens, swimming pools, restaurants & boutiques for both floor and wall.



Origin:	Italy			
Gamma Colours:	Ametista	(pink & white shades)		
	Ambra	(peach shades)		
	Pirite	(charcoal & smoke shades)		
	Acqua Verde	(blue/green shades)		
	Acqua Chiara	(aqua shades)		
	Oltremare	(ocean blue shades)		
	Chiaccio	(white)		
	Multicolour	(blue, aqua, peach, orange & yellow)		
	Iride	(peach, pink, acqua, blue & white mix)		
Cangianti Colours:	Ametista	(pink & white pearl finish)		
	Ambra	(peach pearl finish)		
	Pirite	(charcoal & smoke pearl finish)		
	Acqua Verde	(blue/green pearl finish)		
	Oltremare	(ocean blue pearl finish)		
Chiaccio	(white pearl finish)			
Sizes:	25 x 25mm	25 x 60mm	37 x 37mm	75 x 75mm
Thickness:	10mm			
Proposals:	Straight Pattern 300 x 300 Sheets			
	Brick Pattern 235 x 270 Sheets			
Finishes:	Gamma - Iridescent antique finish			(indoors & outdoors)
	Cangianti - Reflective pearl finish			(indoors & outdoors)
Type:	Porcelain stoneware body with reflective glass face			
Appearance:	Venetian hand-painted watercolour tones			
Production:	Full body porcelain & glass, with tumbled edges			
Technical:	Water Absorption – Nil			
	Stain Resistance – Class 5			