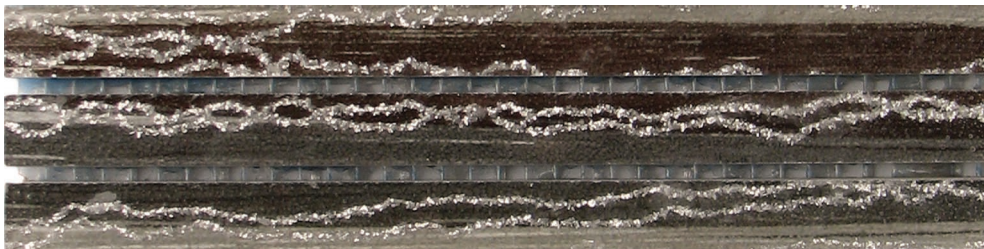
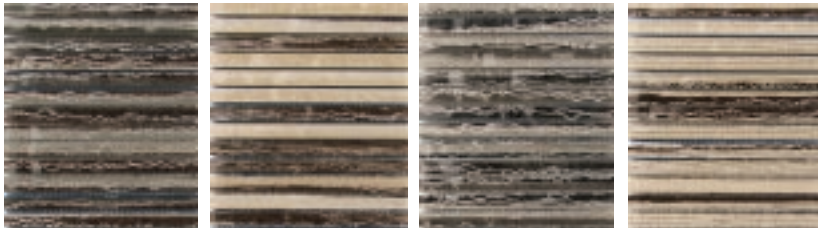


Laccio Glass Mosaics

General: Laccio is a series that reflects the intricacy of fine jewellery embodied in an Italian artesian design. These exquisite and elegant mosaics add class and sophistication to both contemporary and classical architectural finishes.

Applications: Suitable for all residential and commercial areas; including bathrooms, kitchens, swimming pools, restaurants & boutiques for both floor and wall.



Origin:	Italy	
Colours:	Grigio Nero	(grey & black – with silver lace)
	Biscotto Noce	(biscuit & brown – with silver lace)
	Noce Grigio	(brown & grey – with silver lace)
	Crema Noce	(cream & brown – with silver lace)
Sizes:	10 x 140	
Thickness:	9mm	
Proposals:	Straight Pattern	140 x 300 Sheets
Finishes:	Reflective rippled glass finish (indoors & outdoors)	
Type:	Porcelain stoneware body with rectified coloured glass face	
Appearance:	Subtle & rich colour mixes with interwoven silver lace	
Production:	Full body porcelain & glass, with straight edges	
Technical:	Water Absorption – Nil Stain Resistance – Class 5	