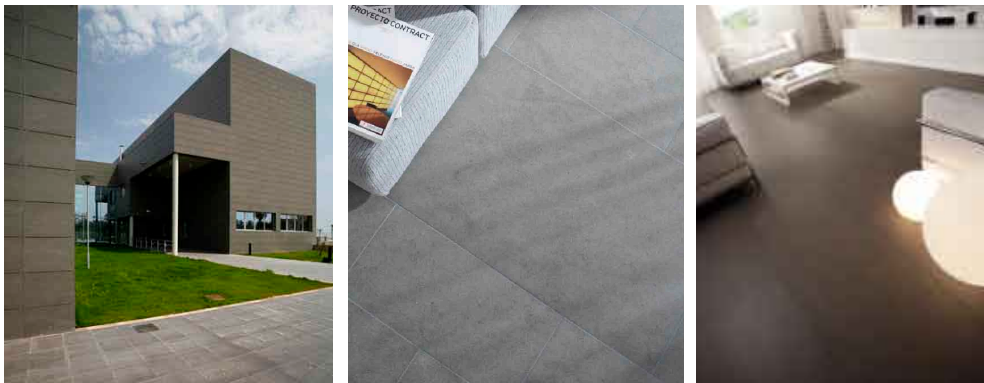


Packstone

General: Packstone is a marvellous union of technology and aesthetics, with a splendid range of formats and colours. This selection of porcelain stoneware is suitable for any commercial or residential application.

Applications: Commercial & residential in and out doors, including foyers, galleries, courtyards, living areas, walls inside & out, building facades, step treads and patio areas, (with lamination and various edge detail finishes being achieved)



Origin:	Spain		
Colours:	Antracite (AN)	(Charcoal tone)	
	Gris (GR)	(Warm Grey)	
	Bambu (BU)	(Dark Caramel)	
	Arena (AR)	(Limestone Cream)	
Sizes:	600 x 1200 mm	600 x 600 mm	300 x 600 mm
Thickness:	11 mm		
Finishes:	Matt surface finish (in & outdoors)		
Type:	Fully vitrified, mottle glazing		
Appearance:	Natural tones with textured surface variation		
Production:	Double-pressed, rectified edges		
Technical:	Water Absorption less than 0.05%		
	Frost Resistant		
	Scratch Resistant		
	Surface Hardness – MOHS 7 (of 10)		
	Stain Resistant (hot running water)		
	Chemical Resistant		
Slip Resistance:	Matt - (DIN 51130) R10		
	Australian Standard AS/NZS 4586-2004		
	- Average Pendulum Number achieved by Wet Test - 45		
	- Classification of Floor Surface in Wet Condition - W		
	- Risk of Slipping when Floor Surface is Wet - Low		