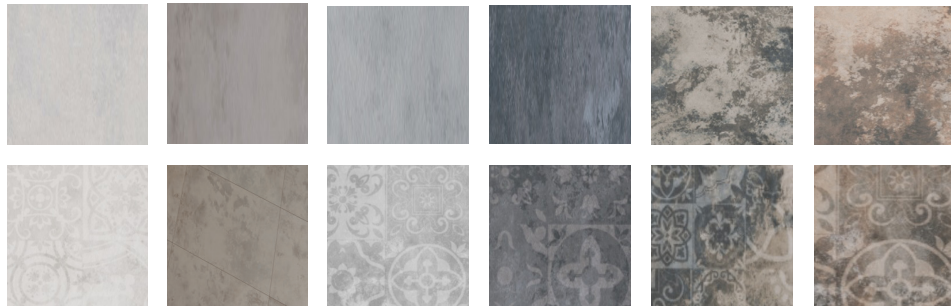


Alca Concrete

General: A fresh approach to having the look of concrete running from inside to outside in large format sizes, and in non-staining and slip rated porcelain. 20mm porcelain pavers to match are available in the Xtreme 2.0 series.

Applications: Commercial & residential in and out doors, including foyers, shopping centres, public areas, courtyards, living areas, patios, walls inside & out, step treads and pool surrounds, (with lamination and various edge detail finishes being achieved)



Sydney showroom by appointment

Phone: (61) 2 8303 0100

Email: reception@rockson.com.au

Origin:	Spain	
Colours:	Blanco	Blanco Deco
	Taupe	Taupe Deco
	Gris	Gris Deco
	Negro	Negro Deco
	Azul	Azul Deco
	Marron	Marron Deco

Availability:

Matt Finish - 11.5mm

Blanco, Taupe Gris, Negro:	600 x 600	300 x 1200	600 x 1200
Azul, Marron:		300 x 1200	600 x 1200
All Deco Colours:		300 x 1200	600 x 1200

Rustica Finish - 11.5mm

Blanco, Gris	600 x 1200
--------------	------------

Rustica Finish - 20mm Paver

Blanco, Gris	450 x 900	600 x 600	600 x 1200
Taupe, Negro		600 x 600	

Type:	Full bodied porcelain
Appearance:	Trowel finished concrete
Production:	Full colour body rectified

Technical:	Water Absorption less than 0.05%
	Frost Resistant
	Breaking Strength - 1,223kgs per cm ²
	High Traffic Resistant
	Stain Resistant (use hot running water)
	Chemical Resistant

Slip Resistance:	Matt finish - R10 - P3 / I
	Rustica finish - R11 - P5 / I